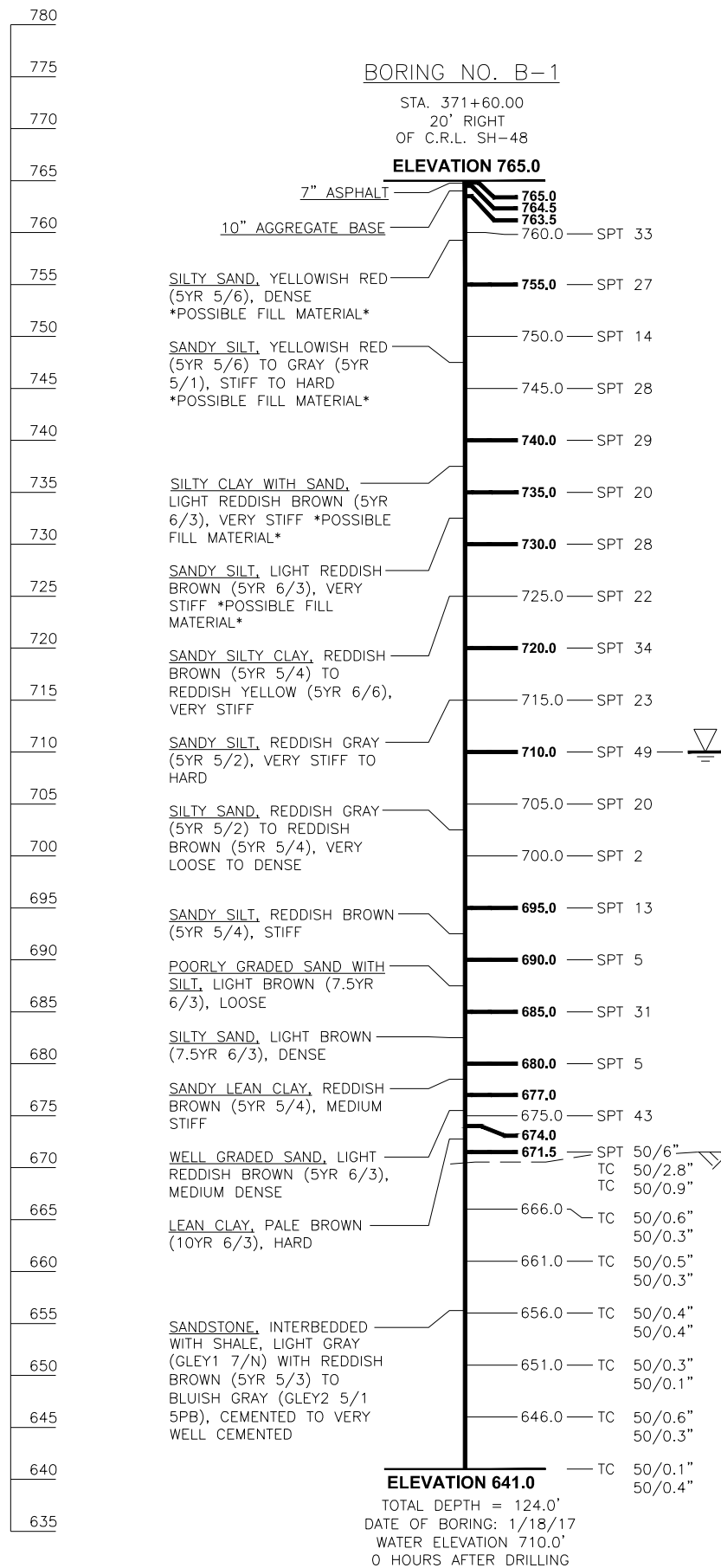
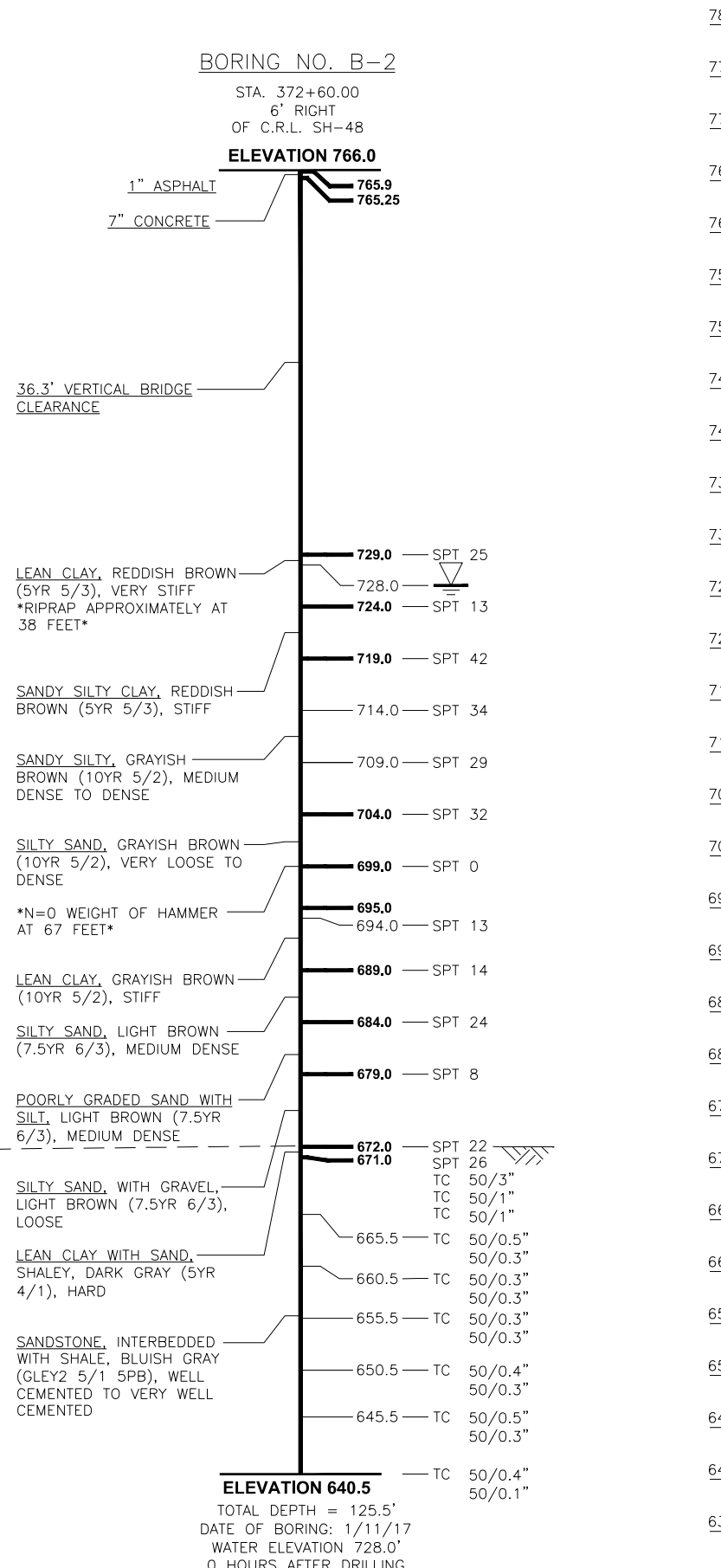


DESCRIPTION	REVISIONS	DATE



INTERPRETED FOUNDATION MATERIAL LINE



- NOTES:
- SPT DENOTES STANDARD PENETRATION TESTS
 - TCP DENOTES TEXAS CONE PENETRATION TESTS
 - ▽ DENOTES WATER ELEVATION DURING DRILLING
 - ▽ DENOTES WATER ELEVATION AT NOTED TIME
 - ▽ DENOTES CAVE IN DEPTH
 - /// DENOTES ROCK ELEVATION

NOTE:
 INTERPRETED FOUNDATION MATERIAL LINE FOR ESTIMATING PURPOSES ONLY.

NOTE:
 ALL GEOTECHNICAL INFORMATION CONTAINED ON THIS SHEET IS COVERED BY THE ENGINEERING SEAL AFFIXED TO AN ORIGINAL GEOTECHNICAL ENGINEERING REPORT THAT HAS BEEN STAMPED AND SEALED BY A PROFESSIONAL ENGINEER LICENSED IN OKLAHOMA. TO OBTAIN A COPY OF THE COMPLETE REPORT, CONTACT THE ODOT OFFICE ENGINEER AT (405) 521-2625. THE CONTRACTOR SHOULD BE FULLY AWARE OF THE SITE CONDITIONS PRIOR TO BEGINNING WORK. ANY ADDITIONAL GEOTECHNICAL INFORMATION WHICH MAY BE DESIRED IS THE RESPONSIBILITY OF THE CONTRACTOR.

WATER ELEVATIONS SHOWN WERE OBTAINED AT THE TIME BORINGS WERE DRILLED AND MAY FLUCTUATE THROUGHOUT THE YEAR.

GEOLOGICAL STATEMENT

"DIVISION EIGHT ENGINEERING CLASSIFICATION OF GEOLOGICAL MATERIALS", PUBLISHED BY THE OKLAHOMA DEPARTMENT OF TRANSPORTATION (ODOT) INDICATES THE PROJECT SITE IS UNDERLAIN BY TALLANT UNIT (PCC).

THE TALLANT UNIT (PTA) CONSISTS OF A MASSIVE, BROWNISH SANDSTONE, SOME GRAYISH SHALES, AND A MINOR AMOUNT OF THIN-BEDDED LIMESTONE.

DESIGN	M.R.S.	SH-48 OVER CIMARRON RIVER CREEK COUNTY
DRAWN	J.F.R.	
CHECKED	M.R.S.	
APPROV.	B.J.K.	
SQUAD	CEC	

**FOUNDATION REPORT
(SHEET 1 OF 4)**

JOB PIECE NO. 27925(04) SHEET NO. 29